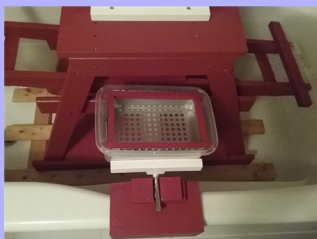


DISCRETE POWER CONVERTER PRACTICAL APPLICATIONS

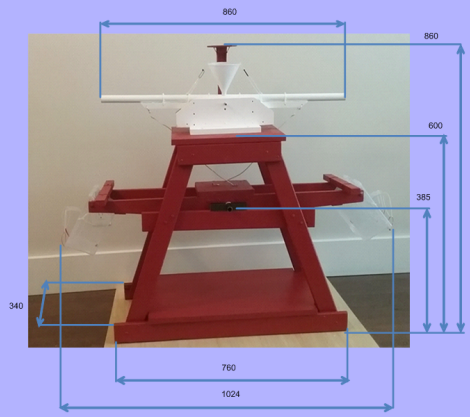


DPC is mechanical, by gravity powered prime mover for Renewable Energy

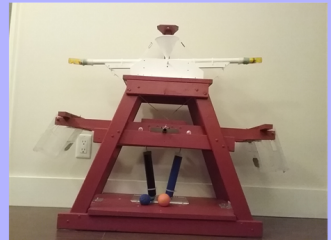
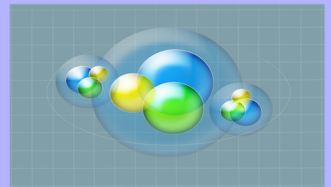
<http://dpc-renewable-energy.com/>
ka6003@gmail.com tech.transfer@yahoo.com



DPC is not "perpetual motion" device.
It is machine which capable to perform of useful mechanical work without any fuel and electricity by means of gravity force



- This small machine was built as "proof of concept" DPC Model 5 to prove the possibility to perform of various mechanical works with different practical loads.
- Here are examples of applications of DPC as mechanical driver for sieving and washing procedures (the output motion from main shaft of DPC is used) and air pumping by piston pumps (the output motion from main rocking beam of DPC is used).
- The matching of output motions of DPC with required input motions of loads was used as criterion for optimal compatibility of machinery.
- This approach simplifies the linkage with loads extremely and reduces the losses accordingly.
- The main shaft of DPC is being connected directly to the shaft of sieve and transfer the rocking motion from the main beam of DPC to it.
- The container attached to the main shaft is able to work as sieve, rocker box (https://en.wikipedia.org/wiki/Rocker_box) or washing machine of rocking type.
- The rocking main beam can be connected directly to loads which requires reciprocate motion: piston pump, press, cutter, crusher, and splitter.
- No intermediate mechanisms (crank shaft, gears) needs, so the losses in machinery can be minimized in this configuration.
- Because of matching the motions of prime mover and load the construction is clear, simple and non expensive.
- Thanking to symmetrical structure of DPC, the doubled loads can be applied.
- The testing shows that loads can be applied also to main shaft and main rocking beam simultaneously without disorder of operation of machine. It can be seen here: <https://youtu.be/tPmVrtATJMM>
- By principle of operation DPC machine can be classified as mechanical relaxation oscillator powered by gravity. This phenomena may be considered as paradigm shift in the converting of gravity force from continuous to discrete mode.
- This is still "proof of concept" model because of the size of machine and rate of input flow of water are limited. However DPC is scalable device and full scale prototype can be built finally.



Action of DPC as washing machine of rocking type.

before shaking

after shaking



We are interested in cooperation in development and design of gravity powered machines and devices. Please, contact us: ka6003@gmail.com tech.transfer@yahoo.com

Renewable Energy Society is authorized promoter of DPC technology in Australia. Please, contact directly Dr. Mark Glickman: mark.glickman@rocketmail.com Phone: +61431942064 (M)

© Copyright 2018 by Alexander Kornich All right reserved. This material may not be published, broadcast, rewritten or redistributed in whole or part without the express written permission of Alexander Kornich.