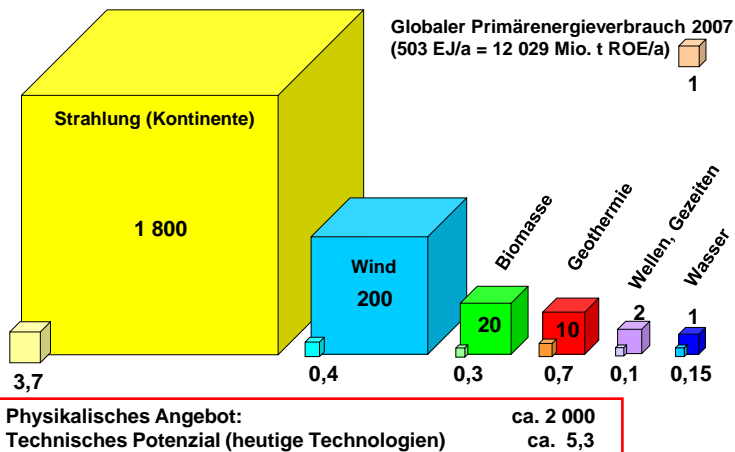


Shaping the Future Environmentally Friendly with Renewable Energy Sources



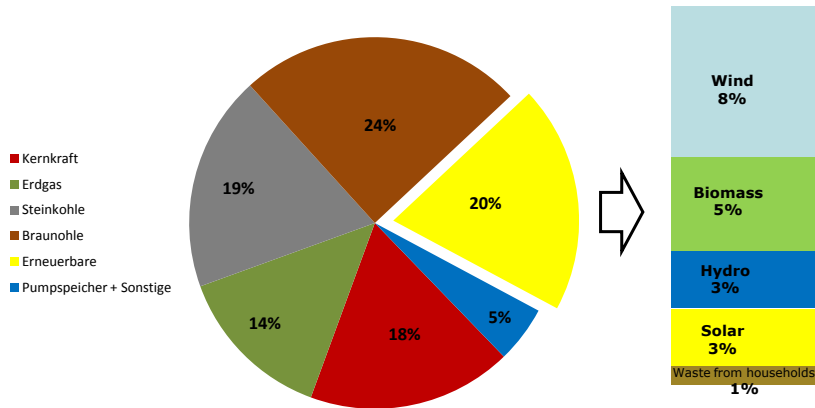
Examples from the region of Freiburg

The Potential of Renewable Energies



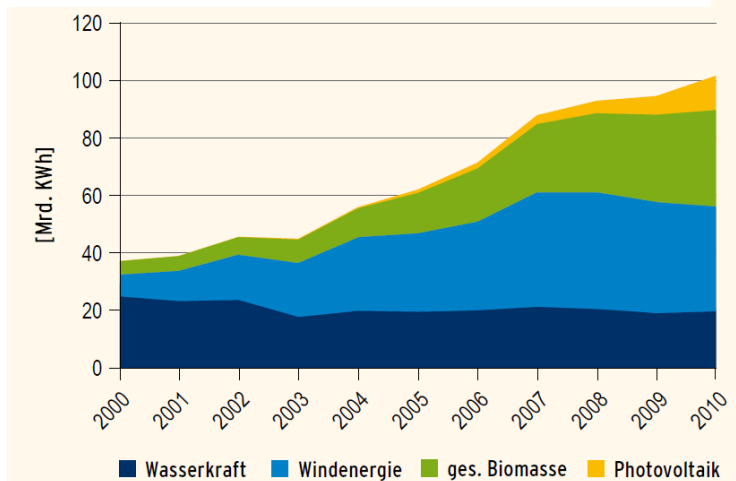
Quelle: NITSCH 2004 - aktualisiert 2010

German Mix of Electricity in 2011



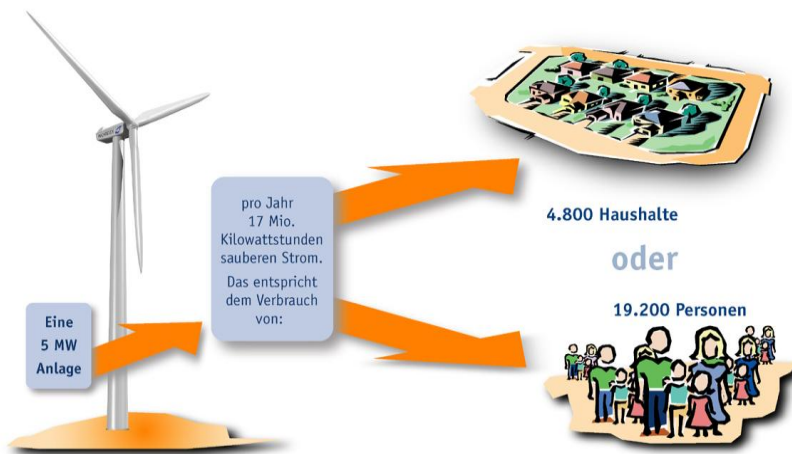
Quelle: BDEW Bundesverband der Energie- und Wasserwirtschaft e.V.

Development of Renewable Energies



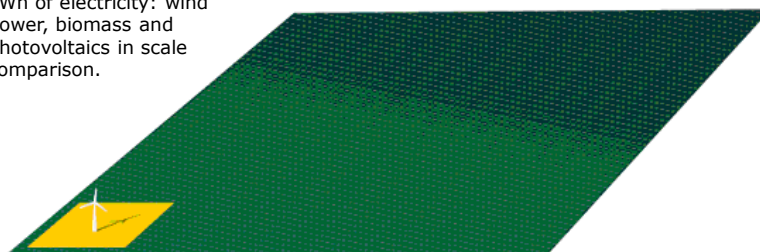
Quelle: BMU

Performance of a 5-Megawatt-Plant



Performance of a 5-Megawatt-Plant

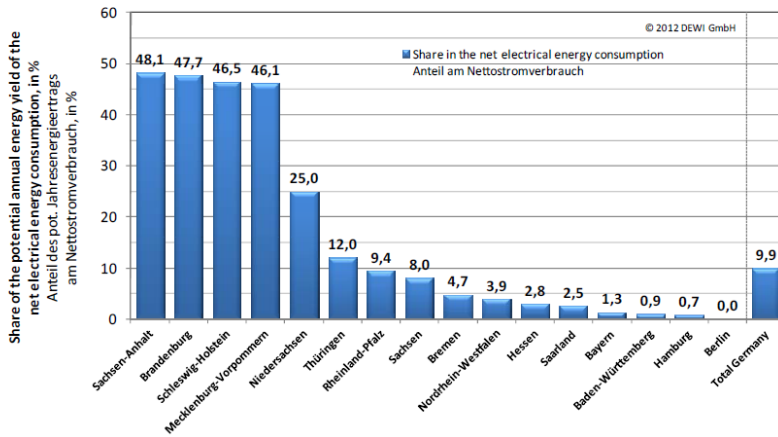
Area required for the production of 1 million kWh of electricity: wind power, biomass and photovoltaics in scale comparison.



A single wind turbine produces, for example 4 million kilowatt-hours. For the same amount of energy you need up to four acres of solar cells or 200 hectares of biomass.

Quelle: enertrag

Wind Energy Use in Germany Share of Wind Turbines in the Net Energy Consumption



Model Projects and Civic Participation Plants



Wind Turbine - Segment of a Tower



Model Projects and Civic Participation Plants



Model Projects and Civic Participation Plants



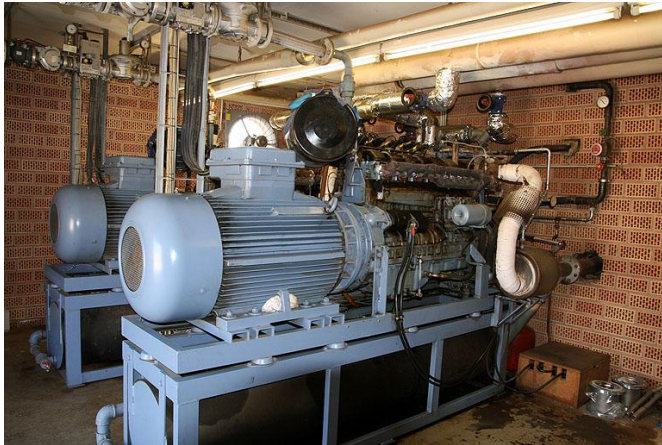
Examples from the Countryside

Farmhouse with a Biogas Plant



Examples from the Countryside

Farmhouse with a Biogas Plant



Examples from the Countryside

Farmhouse with a Biogas Plant

