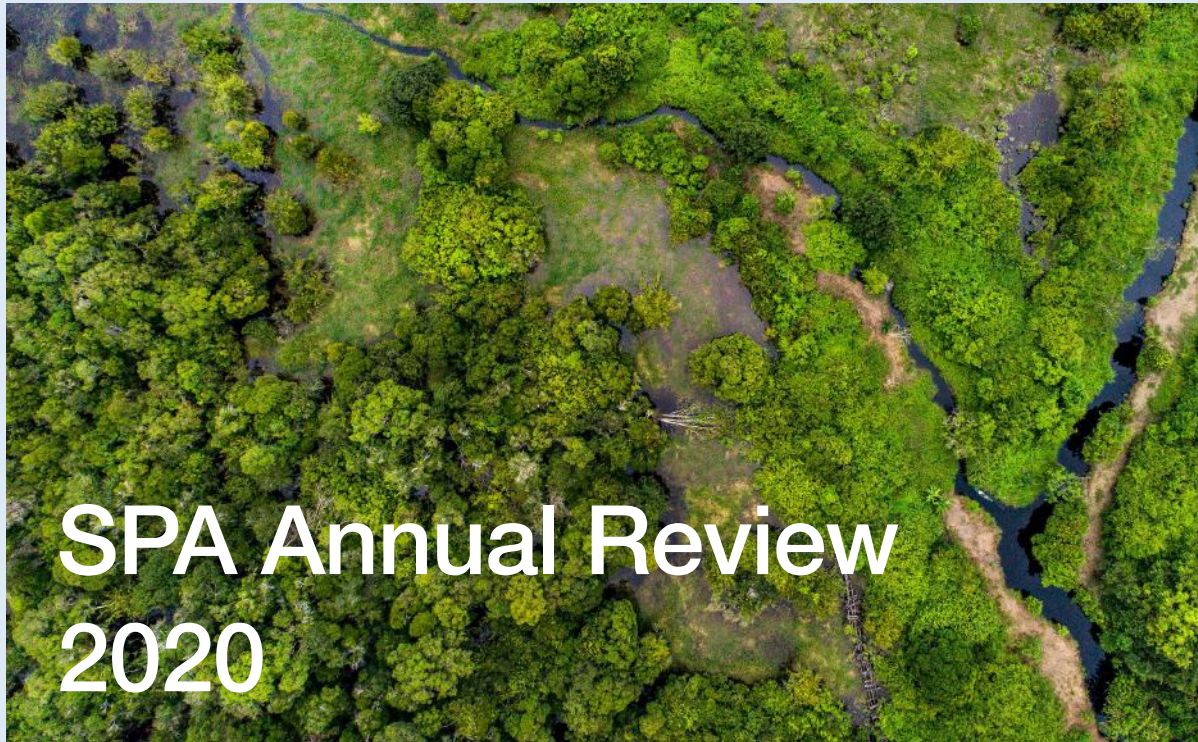




IKI NDC SUPPORT CLUSTER



Partnership on Transparency  
in the Paris Agreement



# SPA Annual Review 2020

© Nanang Sujana / CIFOR (Flickr)

Dear readers,

an eventful year lies behind us. The COVID-19 pandemic poses major challenges for all countries worldwide. Protecting health and preventing future pandemics are top priorities. At the same time, restarting economic activities urgently needs to be thought together with effective climate and biodiversity protection.

The SPA project was also slowed down by the virus. Long-planned events and trips to partner countries were canceled or postponed. Instead, we held many workshops and meetings online. The response was positive in all respects. We avoided emissions and were able to optimize our digital services. For the time being, we will maintain these formats – and continue to focus all our efforts on climate policy.

In June 2020, I took over the program management at SPA from Edgar Endrukaitis, who is heading into his well-deserved retirement. There was also a change at PATPA: Fabian Klemme succeeded Klaus Wenzel as component manager.

I am very much looking forward to my new task and to working with you in this multifaceted and exciting project, especially in these challenging times.

Anna Schreyögg (Program Director)  
[anna.schreyoegg@giz.de](mailto:anna.schreyoegg@giz.de)

# Highlights 2020



## SPA provides updated country analyses on NDC updates

Despite the challenges arising from the COVID-19 pandemic, many countries have moved forward with their NDC update processes. Building on the 27 country fact sheets produced in 2019 in the run-up to the COP, the SPA project analyzed 23 newly submitted NDCs in terms of their increased ambition, incorporating the technical assessment of other institutions. The information has been systematically reviewed according to established criteria in a short and a long version. A mixed picture emerges: some countries commit in their updated NDCs to reducing greenhouse gas emissions even more than originally indicated in the first NDC. However, other countries remain at the existing level or even reduce their targets, including countries that are amongst the 20 largest emitters.



Contact person:  
Anna Pia Schreyögg | [anna.schreyoegg@giz.de](mailto:anna.schreyoegg@giz.de)

© GIZ



## Integrating biodiversity and climate protection: International advisory group provides new impetus

On November 25, 2020, the International Monitoring Committee (IBC) of the International Climate Initiative (IKI) held a virtual meeting. Around 40 high-ranking international climate and biodiversity experts discussed the topic "Integrating climate and biodiversity protection for ambitious action" and created new impulses for the IKI. The SPA project was largely responsible for preparing the content and methodology of the virtual meeting. The event was hosted by the BMU. In view of the COVID-19 pandemic and in the context of the IKI's "[Corona Response Package](#)," integrated approaches to climate and biodiversity protection, combined with the prevention of future pandemics and the protection of human health are of key importance for the IKI. The assembled representatives of international organizations, NGOs, think tanks, and academia agreed that the IKI has great potential to simultaneously advance climate change mitigation, contribute to climate change adaptation, and support the conservation of biodiversity and healthy ecosystems through its tools.



Contact person:  
Anna Pia Schreyögg | [anna.schreyoegg@giz.de](mailto:anna.schreyoegg@giz.de)

© GIZ



## Building Resilience: Strengthening Potentials of Ecosystem-Based Adaptation (EbA) in National Adaptation Plans

In 2020, the IKI projects SPA and Mainstreaming EbA produced two publications on the integration of ecosystem-based adaptation (EbA) in National Adaptation Plans (NAPs) in collaboration with the Canadian International Institute for Sustainable Development (IISD). The [analysis of EbA progress in current NAP processes](#) and the subsequent [guidance document with principles and recommended actions to strengthen the integration of EbA in NAP processes](#) were developed as a contribution to the NAP Global Network and Friends of EbA (FEBA).

Ecosystem-based adaptation offers great potential to generate economic returns while creating multiple benefits, such as improved health, biodiversity protection, food security, and sustainable livelihood opportunities, all of which can strengthen resilience to climate change. To ensure that this potential is fully realized and implemented at the scale and pace required, EbA must be placed at the center of countries' national development and climate strategies. The NAP process is particularly well suited for this purpose because it allows countries to strategically integrate ecosystem-based adaptation into their decision-making, planning, and budgeting, making adaptation a standard part of development practice.



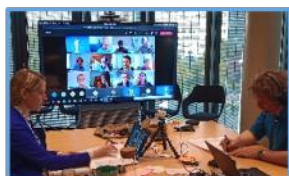
Contact person:  
André Fabian | [andre.fabian@giz.de](mailto:andre.fabian@giz.de)

© GIZ

## NDC Support Cluster



IKI NDC SUPPORT CLUSTER



## Advancing the collaborative think tank approach through "Deep Dives" and IKI consulting

The further development of the IKI NDC Support Cluster as a "collaborative think tank" was consistently pursued in 2020. Various collaborative formats were tested in depth for this purpose. The learning experiences are now being incorporated into the cluster strategy up to the year 2022. The virtual strategy meeting in September was intensively devoted to the question of how the IKI can actively promote the integration of COVID-19 reconstruction activities and ambitious climate and biodiversity measures. In "deep dives," cluster partners discussed selected topics in greater detail and developed concrete conclusions for the BMU. Moreover, in late 2020, a "deep dive" on climate finance under the leadership of SouthSouthNorth (SSN) began. Its focus will be further refined with the BMU. Another "deep dive" proposed by cluster partners on knowledge management in co-learning systems resulted in the publication of a [conceptual framework for knowledge management](#) that has been tested in Peru and offers valuable insights for the IKI.



Contact person:  
Rodrigo Jimenez | [rodrigo.jimenez@giz.de](mailto:rodrigo.jimenez@giz.de)

© GIZ



## Effective climate protection needs nature-based solutions: Recommendations for NDC integration

The WWF USA, with support from SPA, has developed recommendations on how countries can incorporate nature-based solutions into their NDCs. Nature-based solutions are actions to protect, manage, and restore ecosystems that address climate change while enhancing biodiversity and human well-being. The publication "[Enhancing NDCs through Nature-Based Solutions](#)" by WWF USA and the NDC Partnership provides a thematic overview and gathers several country examples. To complement this, the NDC Partnership Support Unit, with support from SPA, conducted the much-respected webinar "Nature-Based Action: from Planning to Implementation." The results have been published in a [blog](#). In addition, there were other [NDC Partnership events](#) focused on the topic.



Contact person:  
Daniel Plugge | [daniel.plugge@giz.de](mailto:daniel.plugge@giz.de)

© GIZ



## Green Recovery: Advisory initiative for a sustainable economic recovery after the COVID-19 crisis

To support member countries in their efforts for a sustainable economic recovery after the COVID-19 crisis, the NDC Partnership introduced the [Green Recovery Initiative](#) in June 2020. Partner governments can request short-term advice on "green" growth from economic advisors in ministries of finance or planning. So far, 33 countries have requested about 50 advisors. SPA has been instrumental in the placement of seven advisors who are supported by existing IKI projects. In addition, SPA is working with the NDC Partnership Support Unit to promote an exchange network among consultants. The latest publication, "[Green Recovery for Practitioners](#)," provides economic advisors with key arguments for sustainable economic recovery and an overview of the tools and actors crucial to effectively address the issue. Moreover, in 2020 six "[Build Forward Better Briefings](#)" from SPA and other IKI projects summarized the latest "green" impulses from a wide range of actors on the national and international level.



Contact person:  
Eva Hübner | [eva.huebner@giz.de](mailto:eva.huebner@giz.de)

© GIZ



## Climate Action Enhancement Package (CAEP)



SPA supports more countries in raising ambition and reviewing NDCs

As part of the NDC Partnership's Climate Action Enhancement Package (CAEP), the SPA project is supporting Costa Rica, Georgia, Namibia, Pakistan, Tajikistan, and Uganda in revising their NDCs. Many of the activities have now been successfully implemented. In Costa Rica, for example, CAEP support was crucial to the development of a component on nature-based solutions. This was integrated into the country's more ambitious NDC, which was submitted by the end of 2020. Additionally, the Climate Helpdesk facilitated ad hoc support to Nepal, Namibia, and Malawi - in the case of Namibia, for example, on the role of the private sector in collecting emissions data.



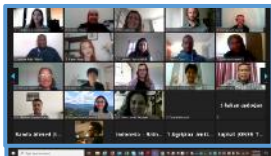
Contact person:  
Eva Hübner | [eva.huebner@giz.de](mailto:eva.huebner@giz.de)

© GIZ

## Partnership on Transparency in the Paris Agreement (PATPA)



Partnership on Transparency  
in the Paris Agreement



Annual Partnership Retreat 2020:  
Paving the way for successful COP 26  
transparency negotiations

PATPA's [Annual Partnership Retreat](#) was held virtually for the first time between September 28 and 30, 2020. 67 transparency negotiators and practitioners from 41 countries and representatives from ten international organizations participated. The thematic focus of the retreat was on the ongoing negotiations on the Common Tabular Formats (CTF) as a shared tabular format for information to verify NDC progress, as well as the transition from current Monitoring, Reporting and Verification (MRV) requirements to the Enhanced Transparency Framework (ETF). Participants expressed confidence that they would be able to bridge the gap created by the COVID-19 pandemic between COP 25 and COP 26 and find compromises on key negotiating issues. However, great efforts will be required from all parties in the run-up to COP 26.



Contact person:  
Fabian Klemme | [fabian.klemme@giz.de](mailto:fabian.klemme@giz.de)

© GIZ



## Increased virtual exchange of the PATPA Regional Groups and new national Focal Points

2020 was a productive year for the five [PATPA Regional Groups](#). Moving the regional workshops and seminars into a virtual space enabled networking, exchange, and collaborative work among regional transparency experts to take place despite the COVID-19 pandemic. The thematic focus of the virtual events was on the implementation of MRV and transparency rules at the national level, such as NDC tracking under the ETF, data collection and inter-institutional collaboration in the Agriculture, Forestry and Other Land Use (AFOLU) sector. Furthermore, the Anglophone Africa Group and the Asia Regional Group initiated the nomination processes of PATPA Focal Points, which will provide direct contact persons for PATPA activities in the countries in the future.



Contact person:  
Fabian Klemme | [fabian.klemme@giz.de](mailto:fabian.klemme@giz.de)

© GIZ

## LEDS GP Global Partnership (LEDS GP)



## Realignment of LEDS GP: Agile co-management and clear strategic focus until 2025

The steering of LEDS GP was set up in a more agile way and a clear strategic focus for the period until 2025 was developed in a participatory process. Starting in 2021, the U.S. National Renewable Energy Laboratory (NREL) and the SPA project will co-manage the LEDS GP global secretariat. The co-management strengthens the LEDS GP as a platform for climate innovation, exchange and shared learning between BMU and the US State Department. The focus lies on the topics of green recovery and sectoral transformation.

Together with other partners, a global Community of Practice on "Green and Socially Inclusive Economic Recovery" is already in preparation. It will allow more specific responses to the needs of partner countries in the current pandemic situation. Another focus is on the founding support for a "Regional Climate Action Investment Catalyst." This investment catalyst will support and advise project developers, especially from municipalities, counties and cities, in securing project financing and climate-neutral infrastructure investments. Lastly, targeted networking with BMU-funded initiatives and projects such as the NDC-P, NAMA Facility, Financing Energy for Low-carbon Investment – Cities Advisory Facility (FELICITY), City Climate Finance Gap Fund and C40 Cities is being planned.



Contact person:  
Felipe Gomez | [felipe.gomez@giz.de](mailto:felipe.gomez@giz.de)

© GIZ



## LEDS GP accelerates NDC implementation and ambition raising

LEDS GP carried out many important activities in 2020 for the implementation and ambition raising of NDCs. The LEDS LAC Regional Platform for Latin America and the Caribbean, together with partner institutions EUROCLIMA+, IDB, and UNDP, organized a series of 34 digital workshops on "[Climate Action in Times of Crisis: Fostering Sustainable Recovery post-COVID-19 in Latin America and the Caribbean](#)" with more than 5,200 participants from 23 countries. The Africa LEDS Partnership established a new Community of Practice on AFOLU in 2020, focusing on emissions reductions in livestock. The Asia LEDS Partnership co-hosted several online workshops with the Grid Renewable Energy Community of Practice, including "Economic Recovery and Long-Term Visioning for the Power Sector Transformation," "Energy Storage," and "Climate-smart energy development planning." In addition, LEDS GP supported several countries through the Climate Helpdesk, including Argentina in updating its NDC Transmission Plan and dealing with COVID-19.



Contact person:  
Felipe Gomez | [felipe.gomez@giz.de](mailto:felipe.gomez@giz.de)

© GIZ