



Sustainable energy webinar, UNITAR, 28th September 2021

Baselines, targets and roadmaps for decarbonization in humanitarian settings

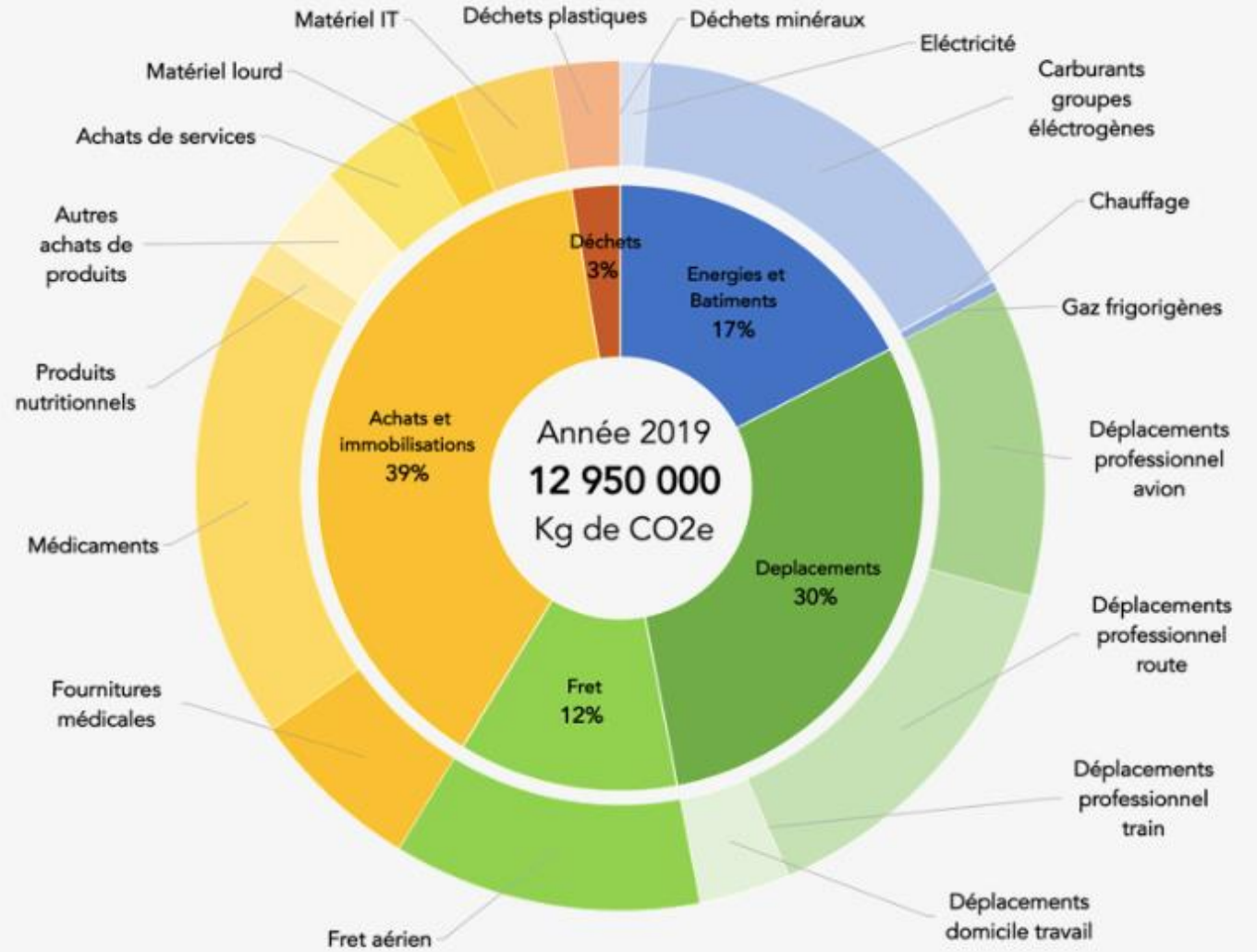


THE CLIMATE ACTION
ACCELERATOR

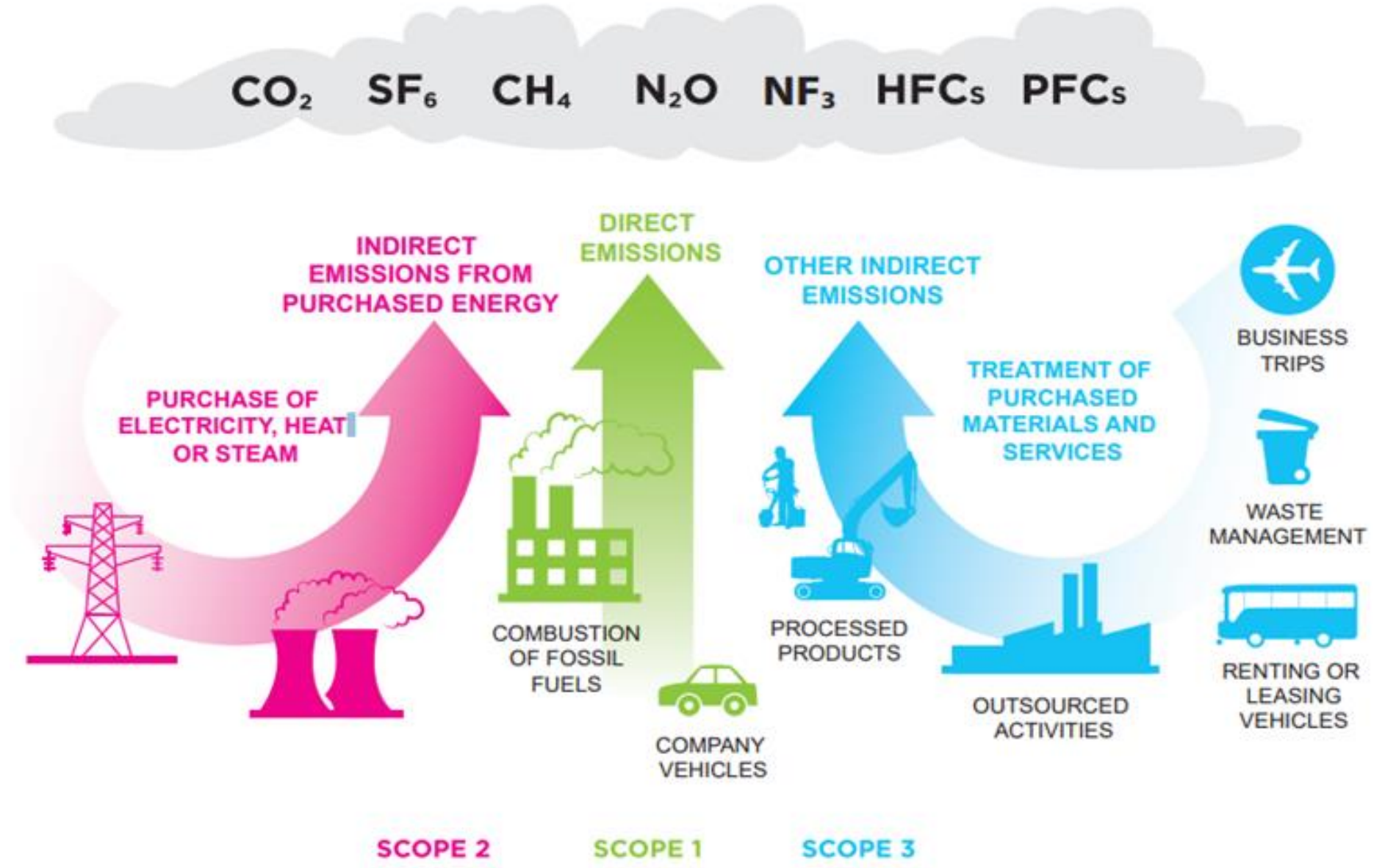
ALIMA 2019



EMPREINTE CARBONE ALIMA 2019



PERIMETER: SCOPE 3 > 70%

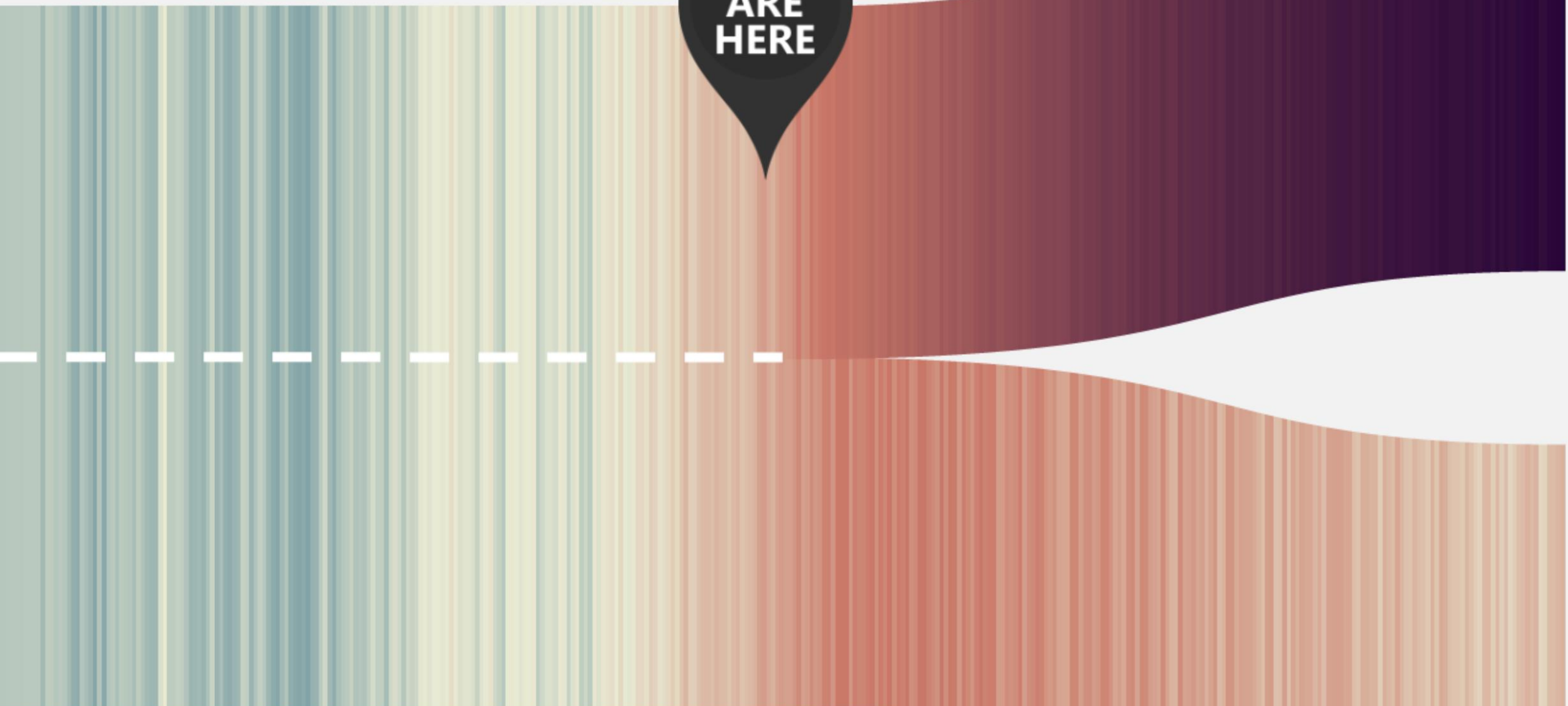


METHODOLOGY CHALLENGES



- **Perimeter** : include all activities that contribute to the organisation's mission (including partnerships and funding)
- **Data collection**: where not to compromise (energy) and where to accept compromise (procurement, partnerships) in a continuous improvement approach
- **Emission factors**: reliability, adaptation to humanitarian contexts and level of precision
- **Integrity and comparability** between organisations
- **Need for a standard methodology** to emerge in the aid sector

**WE
ARE
HERE**





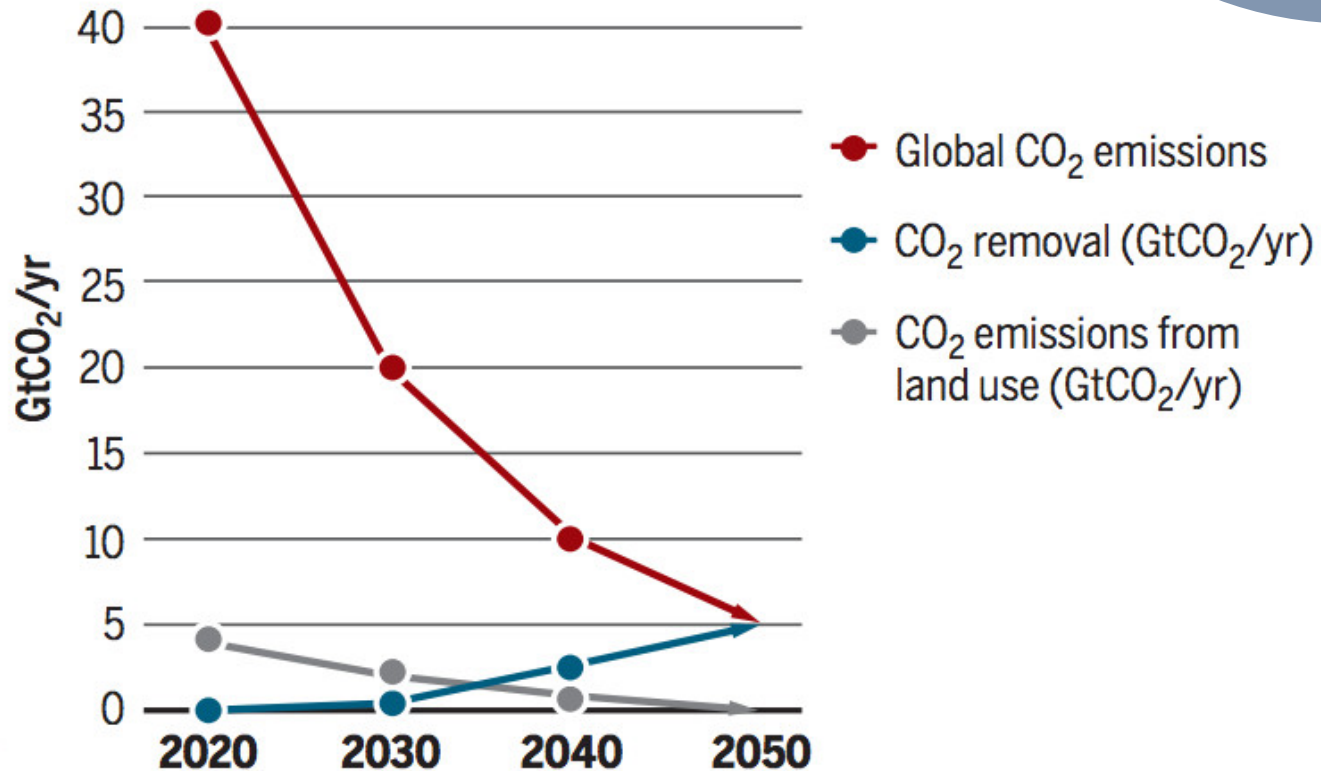
**STABILIZING
CLIMATE
MEANS
STOPPING
EMISSIONS**

**&
DEVELOPING
CARBON SINKS
IN THE NEXT
25 YEARS**



**TIME IS
OF
ESSENCE**

Global carbon law guiding decadal pathways



KEY STEPS FOR A TRAJECTORY



- # **Most legitimate target: - 50% reduction by 2030, without carbon offsets**
- # **Identify the main solutions and actions for every lever**
- # Example of energy: switch to renewables, building and equipment efficiency, consumption practices)
- # **Prioritize versus impact/feasibility/effort**

Areas for high potential reduction



Staff travel policy / Reduction of air freight / Local purchase



Building heating and cooling / Construction techniques / Energy supply



Planetary health diet at cafeteria and events / Local food supplies



Equipment life extension / Shared documents / Automated shutdowns /
Combine personal/professional use / Sustainable purchasing policy



Environmental Procurement criteria / Material footprint &
waste management (Reduce, Re-use, Recycle & Dispose)...





SOLUTIONS ASSESSMENT

FEASIBILITY



3 complementary types of action



Behaviour change: mobilisation and responsibility of individual staff.

Office good practices

Policies and processes, integrating environmental parameters into work methods and decision making.

Transport, travel and procurement

Clean technological solutions, available today and ready for deployment.

Buildings, renewable energy, energy efficiency, technical standards of equipment

KEY STEPS FOR A TRAJECTORY



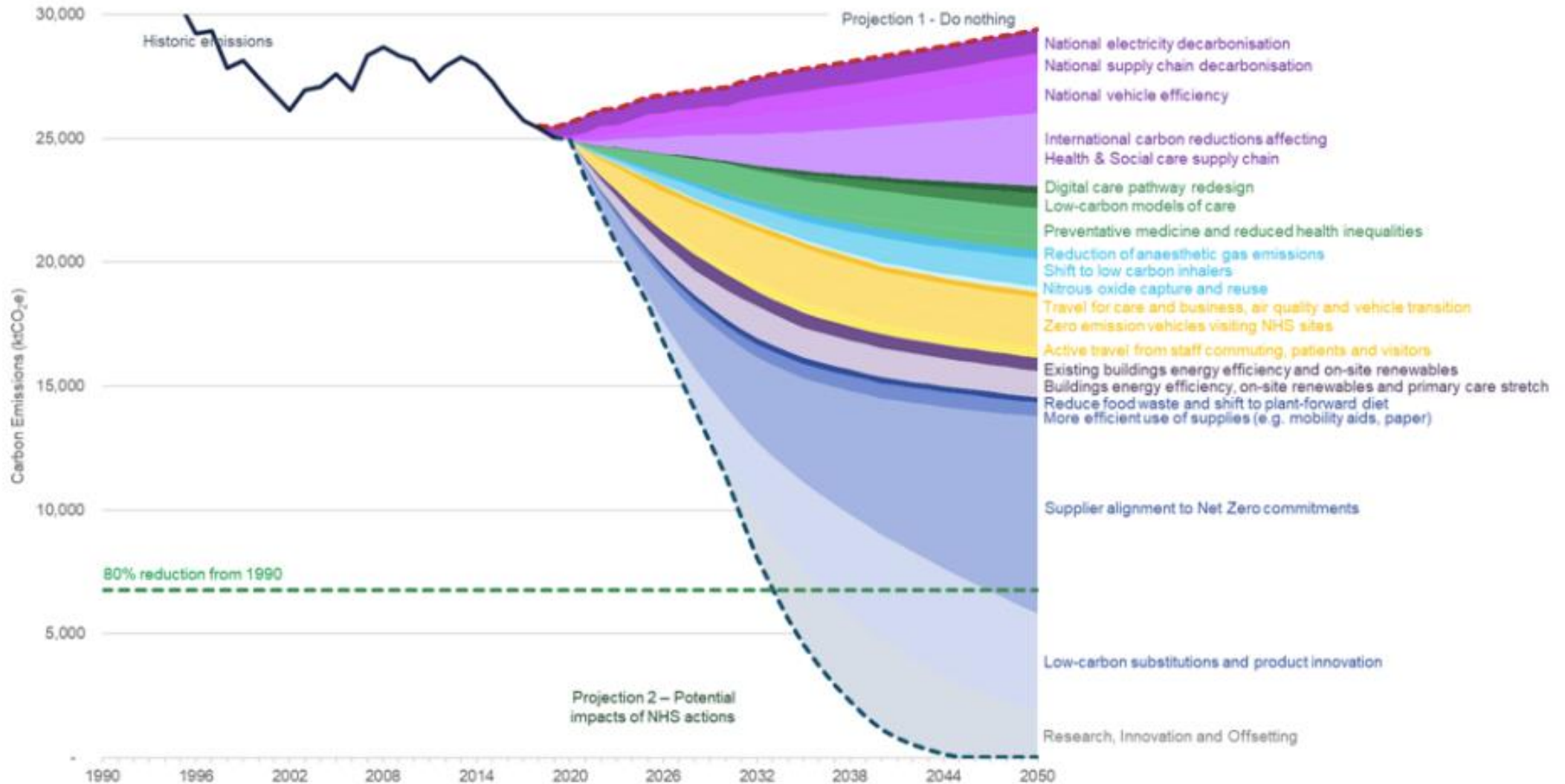
- # **Model a trajectory** based on the solutions' mix
- # **Quantify the expected results** and milestones
- # **Meet the human challenge**
- # **Implement and monitor**
- # **Learn and adjust**



EXAMPLE : NHS UK

TRAJECTORY

Figure 5: Pathway to net zero for the NHS Carbon Footprint Plus Scope



HOW WILL WE GET THERE?



EMPOWER

One-stop-shop to at least halve emissions by 2030



CHAMPION

Commit and transform the ecosystem (vector of change)



COMMUNITY

Share, show progress and reward