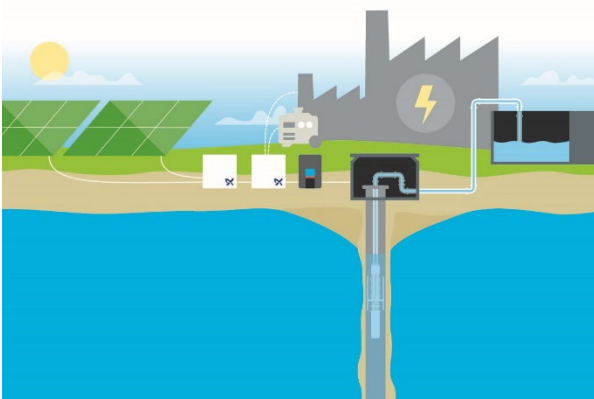


## Grundfos PowerAdapt

PowerAdapt is an electrical cabinet that allows you to safely mix solar power (DC) with grid/generator power (AC) to deliver a constant power for any pumping operation.

With only solar power, pumping performance changes across the day with fluctuation even during peak hours. Using PowerAdapt, you can draw the missing power from back-up power source like grid or generator to deliver a constant performance. The solution allows you to maintain solar power as your main source of energy while enjoying stable operation.



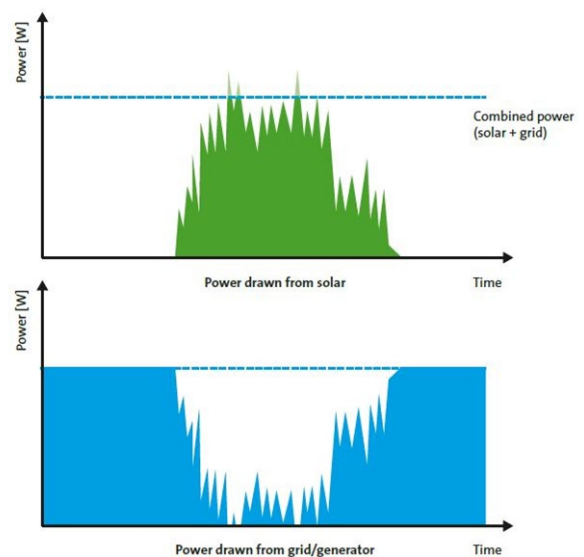
### Our solution can help you to:

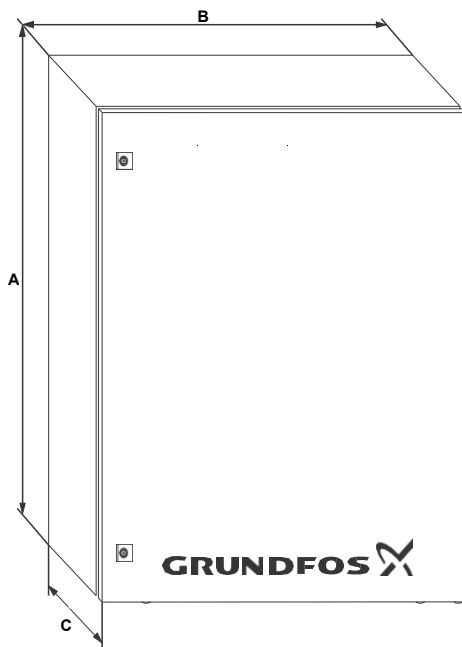
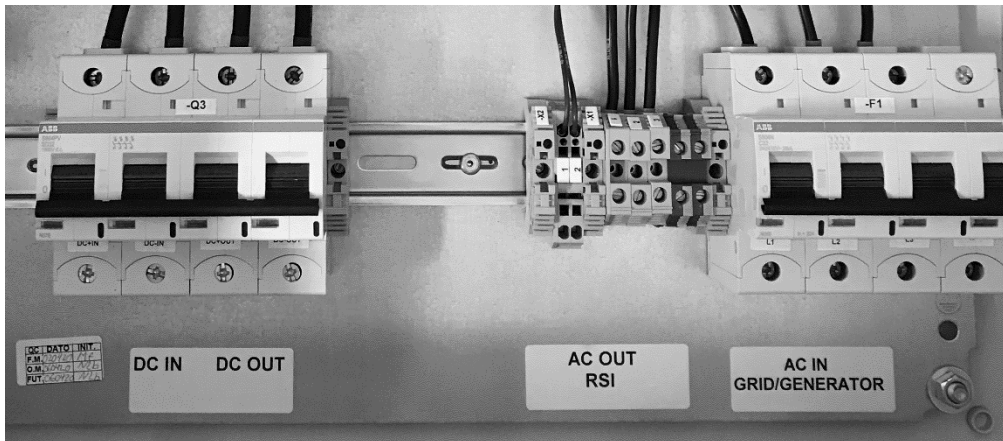
- Reduce pump energy cost
- Meet carbon emission budget
- Invest according to budget or space
- Avoid intermittent power supply from using solar energy only
- Utilize solar power to the greatest extent possible
- Enjoy continuous operation 24/7 with backup for poor grid stability
- Maximize output from a low yield borehole



### Features:

- Power blending of AC and DC power input
- Power Meter on Grid and Gen-set
- Phase lost protection
- Product over temperature cut-off
- Power-On delay timer
- Back Feed protection / Anti-islanding
- Remote monitoring connection





### Product numbers:

PowerAdapt	Product number
PowerAdapt for RSI 16A	99886425
PowerAdapt for RSI 31A	99886426
PowerAdapt for RSI 72A	99886427

### Dimensions:

PowerAdapt	A	B	C
PowerAdapt 16A	510	540	260
PowerAdapt 31A	640	640	310
PowerAdapt 72A	650	640	310

(Dimensions including cooling plate and cable glands)

### Electrical data:

<b>Voltage</b>	<b>3 x 380-415 V</b>	
<b>Installation environment</b>	Minimum ambient temperature	[°C] -10
	Maximum ambient temperature	[°C] 50
	Maximum relative humidity	[%] 95
<b>Electrical data</b>	Recommended MPP voltage	[VDC] 530
	Maximum Input DC voltage	[VDC] 800
	Frequency	[Hz] 50/60
	Phases	3
	Enclosure class	IP54