

Current status and market prospects for DG in Brazil

Daniel Vieira
Regulation Specialist
Office of Electricity Distribution Regulation



Santiago
25 October 2016

The background of the slide features a photograph of a house with a red-tiled roof. A large array of blue solar panels is mounted on the roof, extending from the top left towards the center. In the foreground, there is a thick, green hedge. The entire scene is overlaid with a semi-transparent dark blue graphic that contains the text. The graphic has a white L-shaped bracket on the left side.

DG in Brazil

REGULATORY FRAMEWORK

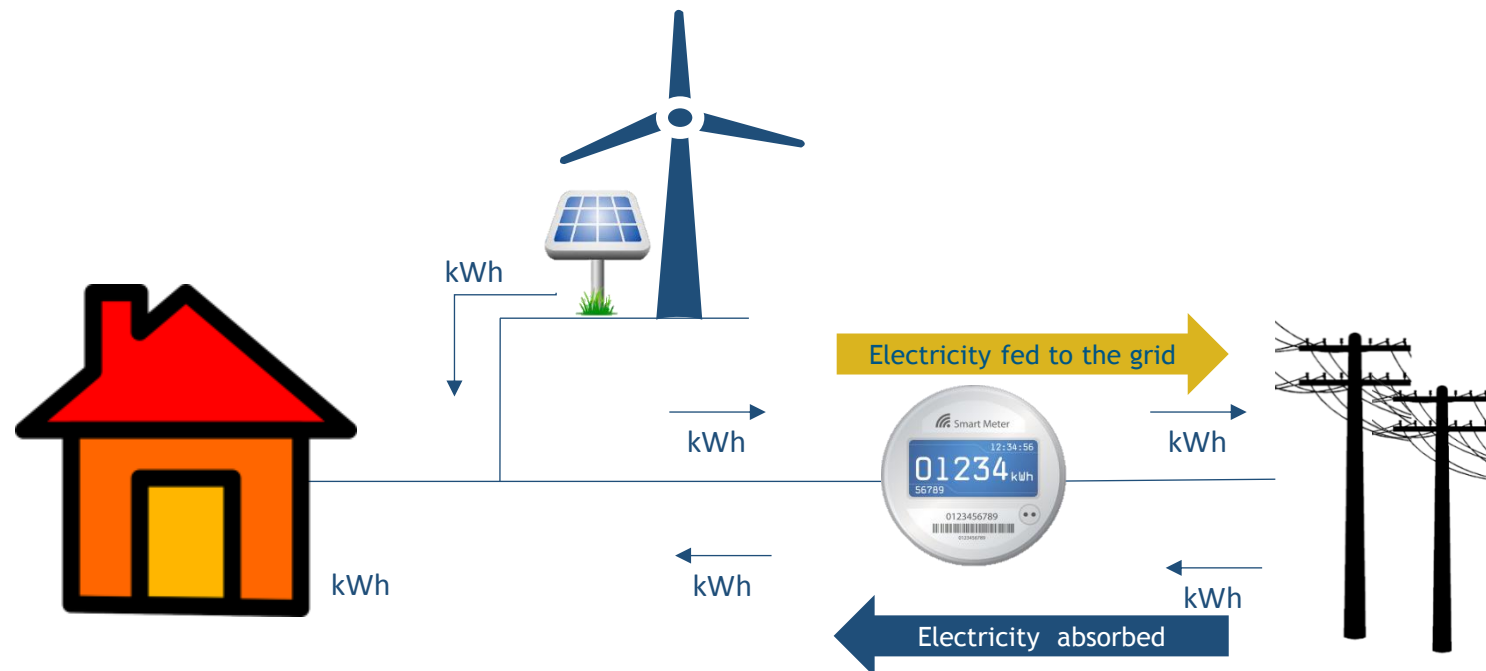


ANEEL Resolution 482/2012 **NET METERING**

- Micro (up to 75 kW) and mini (75 to 5.000 kW)
- 60-month roll over
- Any renewable energy source

ANEEL Resolution 482/2012

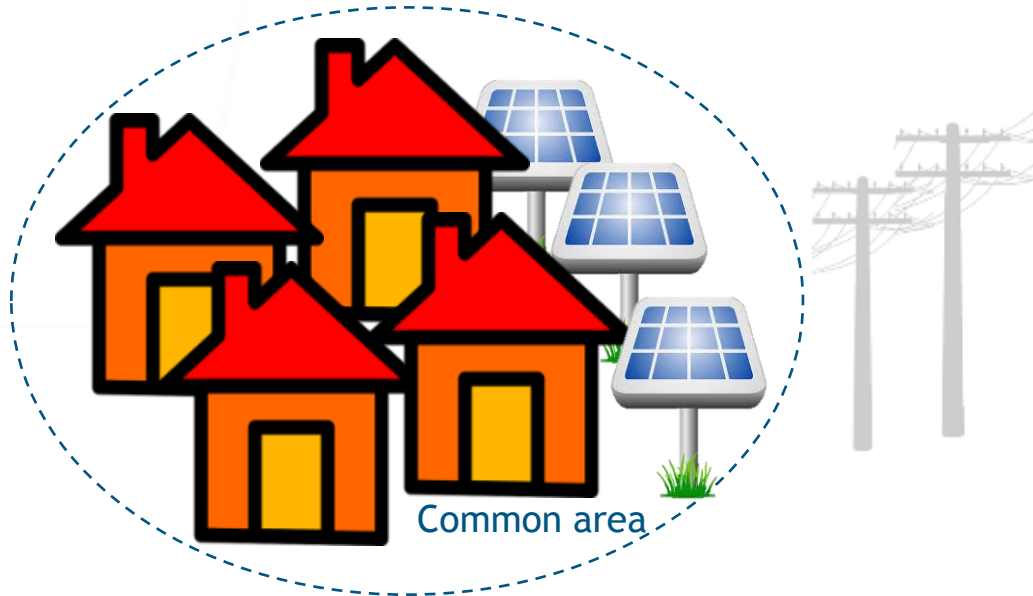
NET METERING



NET METERING POSSIBILITIES



On site DG

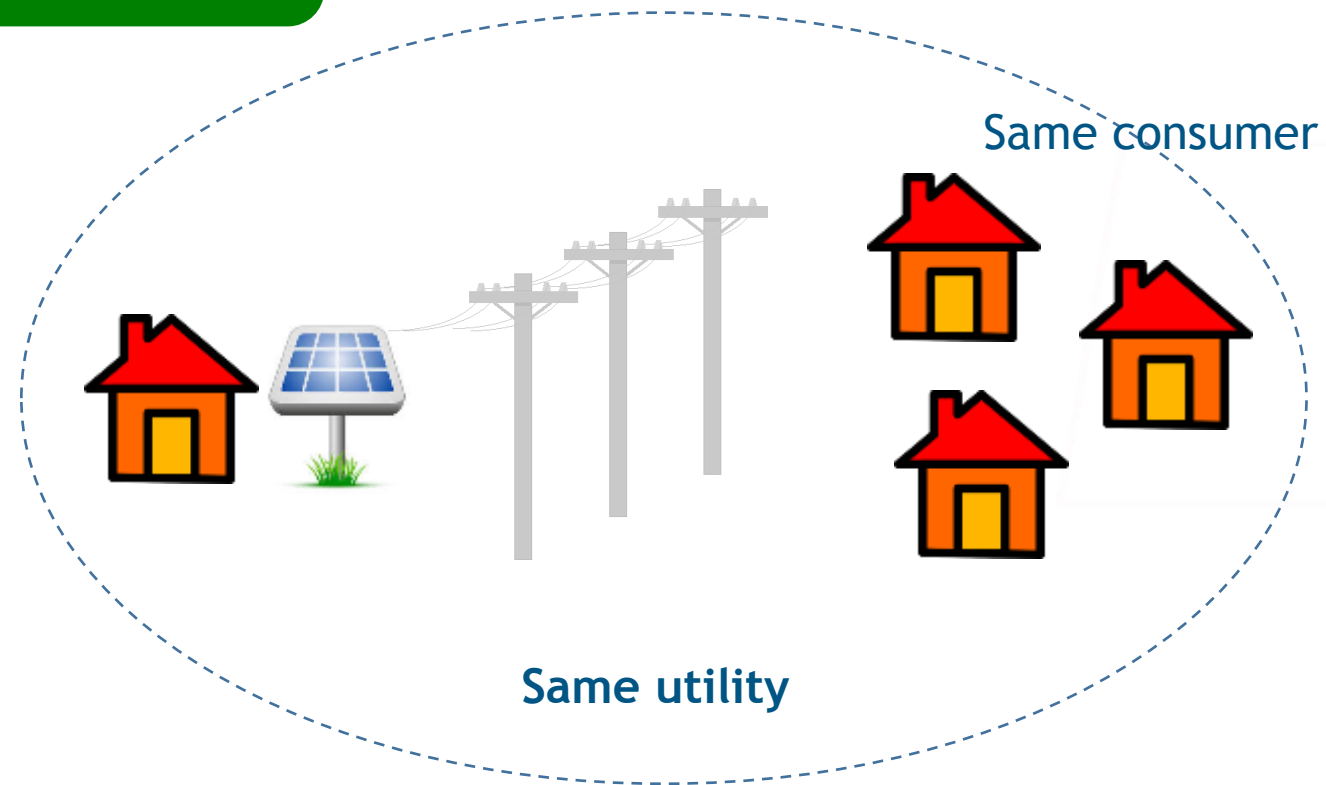


Recent

Aggregated
Net Metering

NET METERING POSSIBILITIES

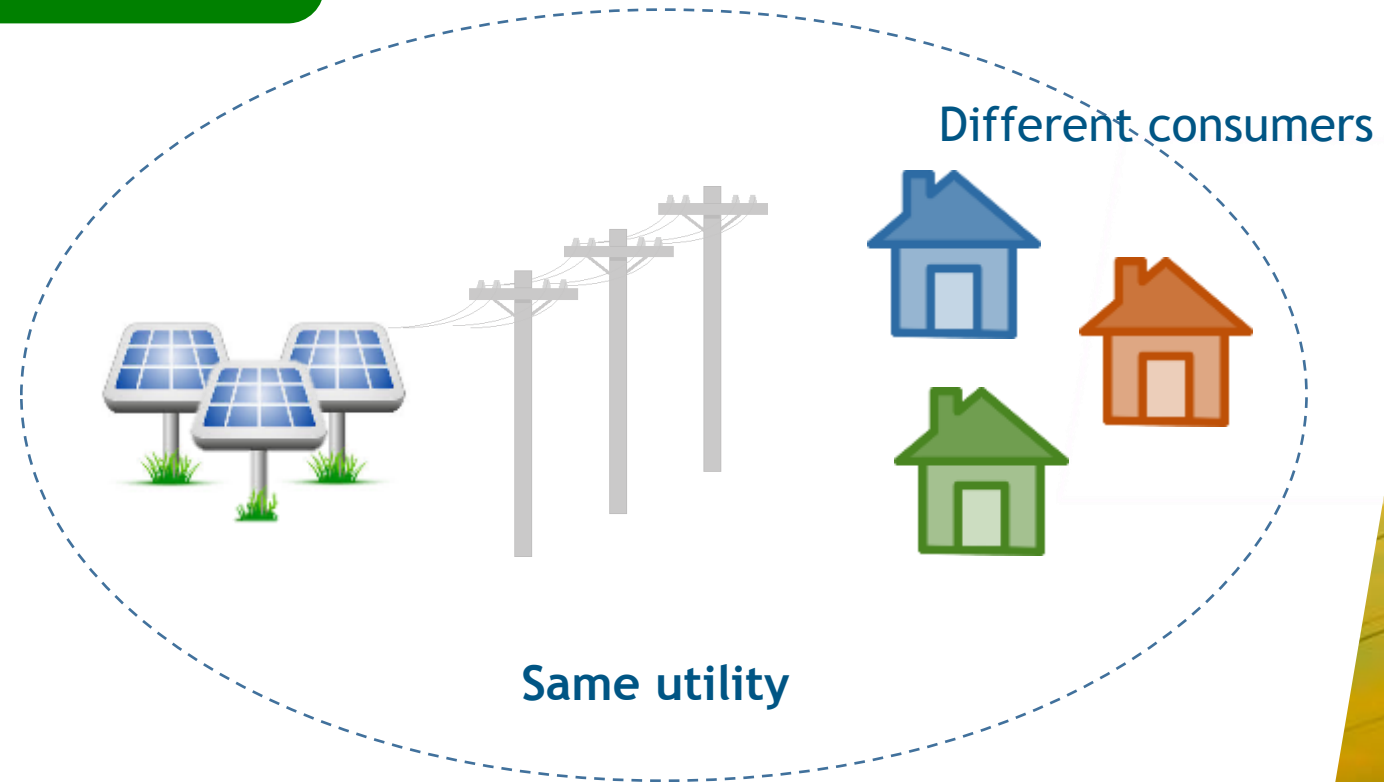
Virtual Net Metering



NET METERING POSSIBILITIES

Shared Net Metering

Recent



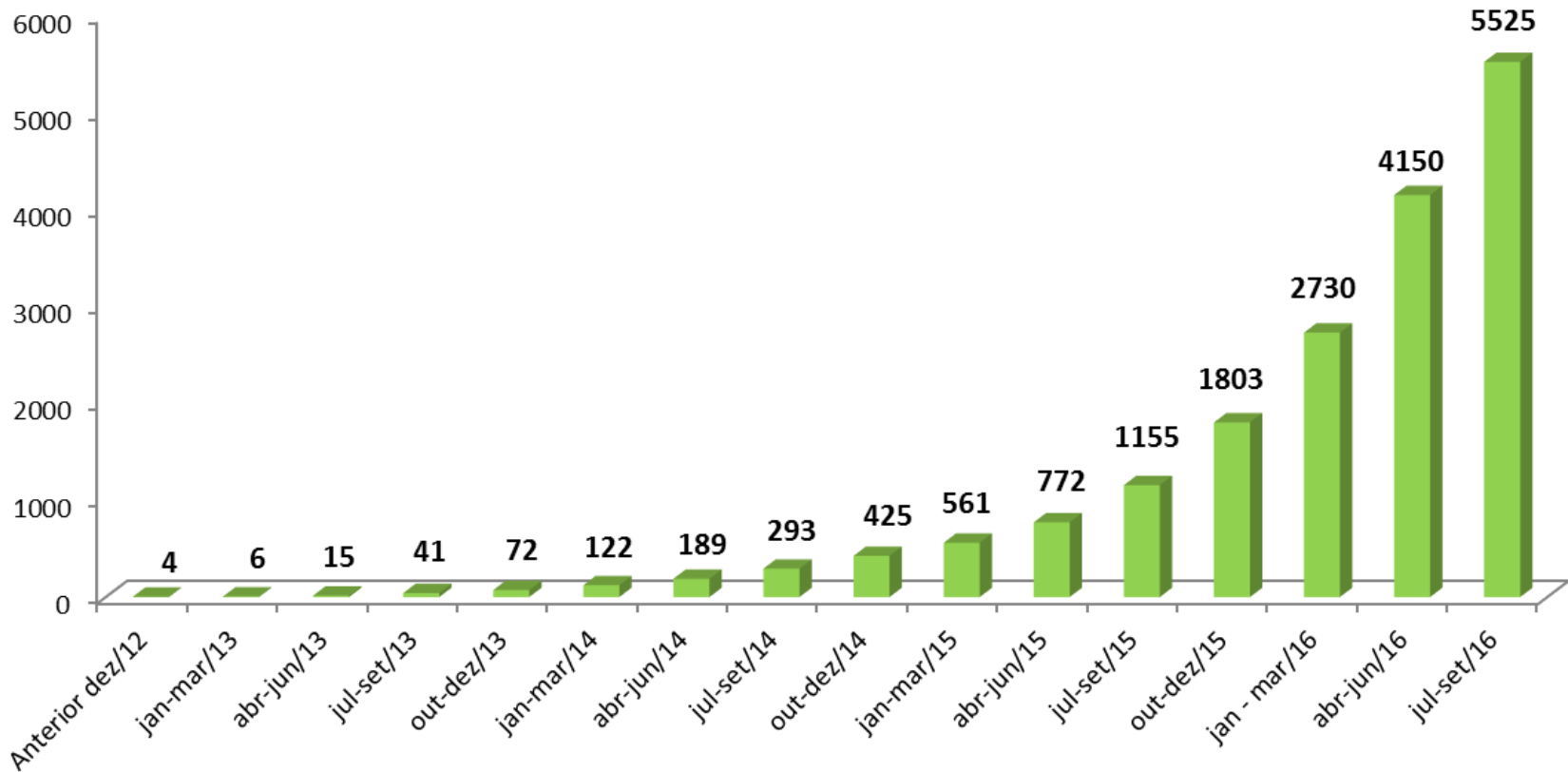


NET METERING

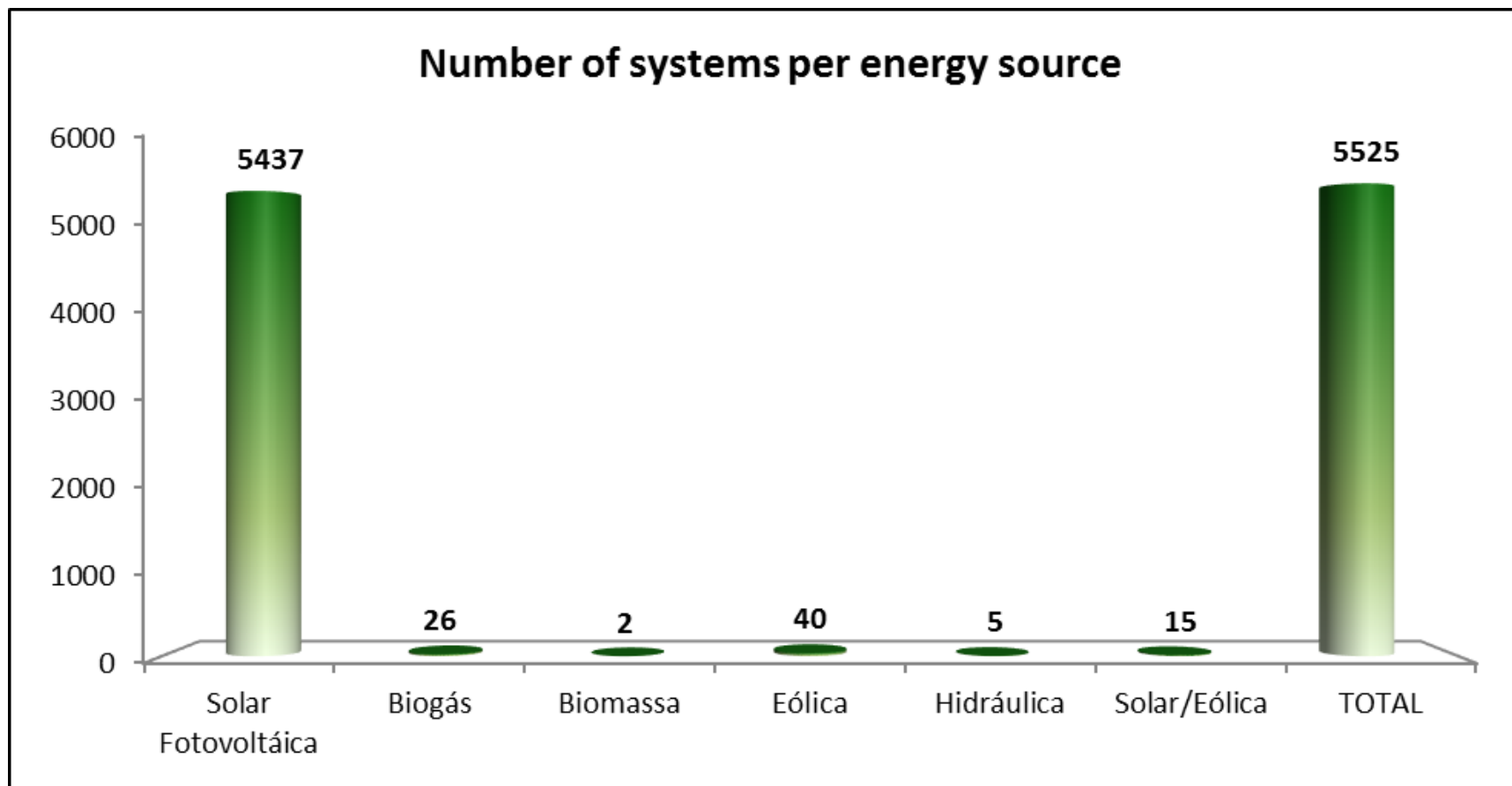
CURRENT MARKET STATUS

NET METERING CURRENT MARKET STATUS

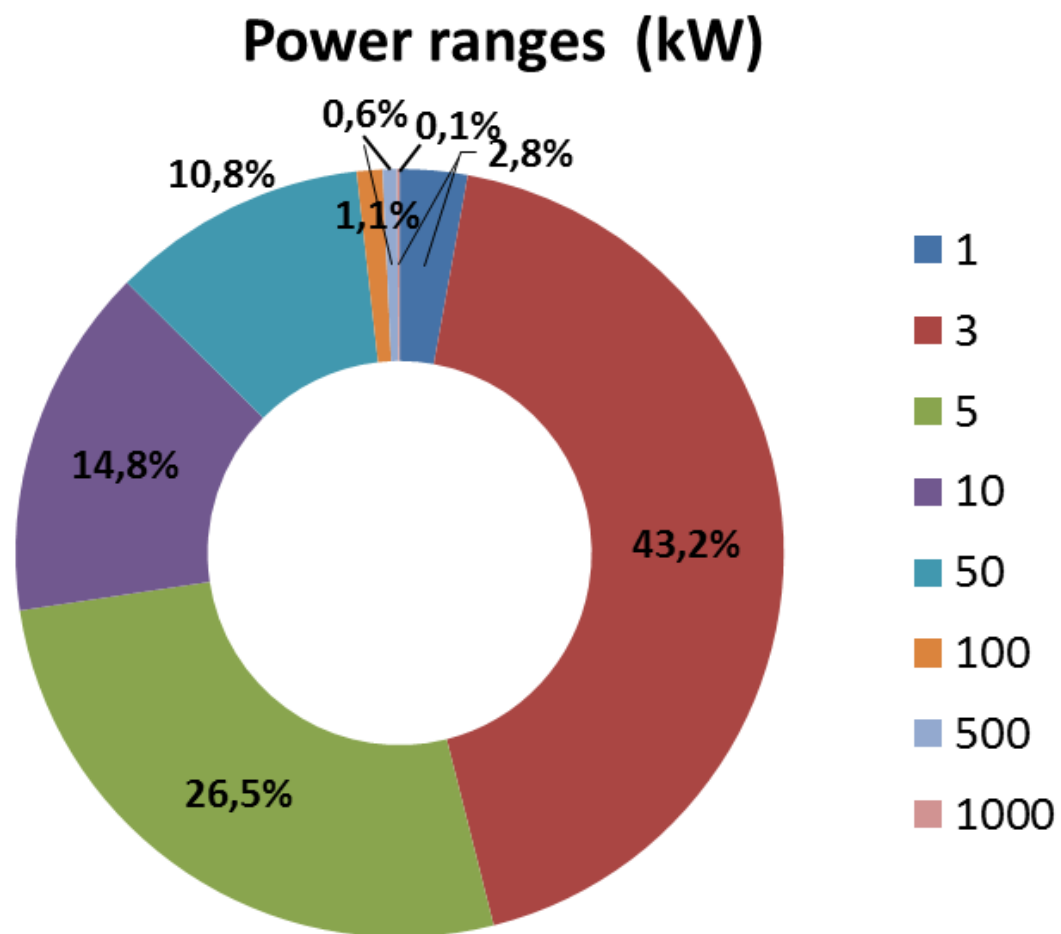
Cumulative number of systems



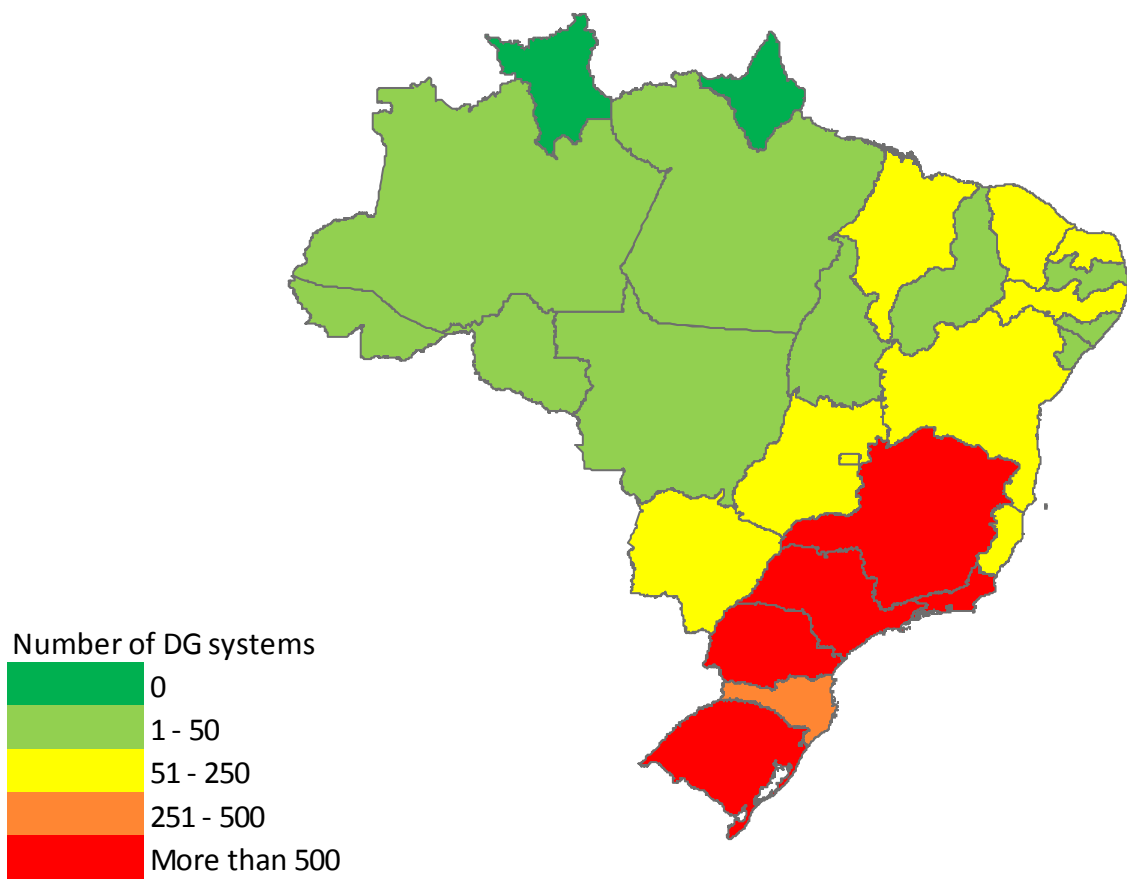
NET METERING CURRENT MARKET STATUS



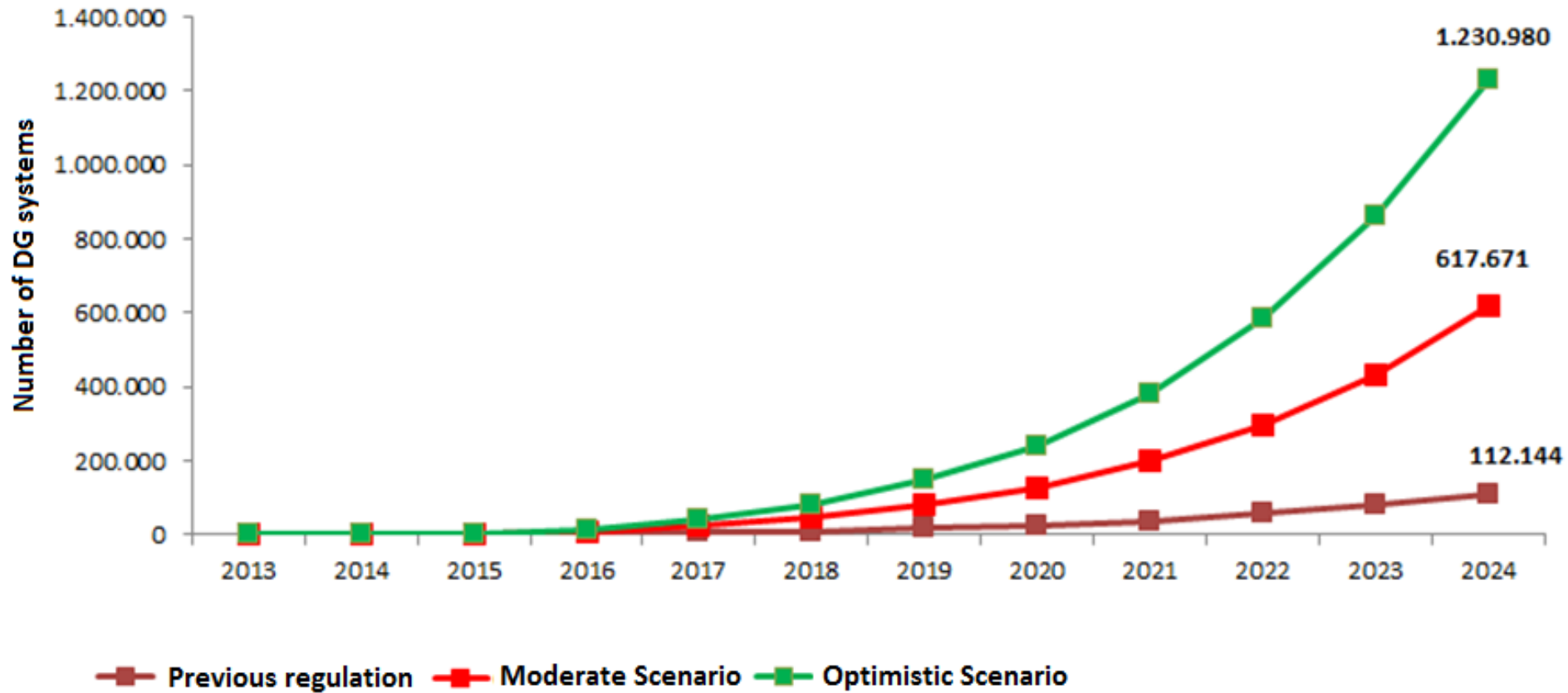
NET METERING CURRENT MARKET STATUS



NET METERING CURRENT MARKET STATUS



NET METERING FUTURE MARKET PERSPECTIVES





NET METERING

CHALLENGES

NET METERING
CHALLENGES FOR DG INTEGRATION

Publicity

Funding

Tax



NET METERING
CHALLENGES FOR DG INTEGRATION

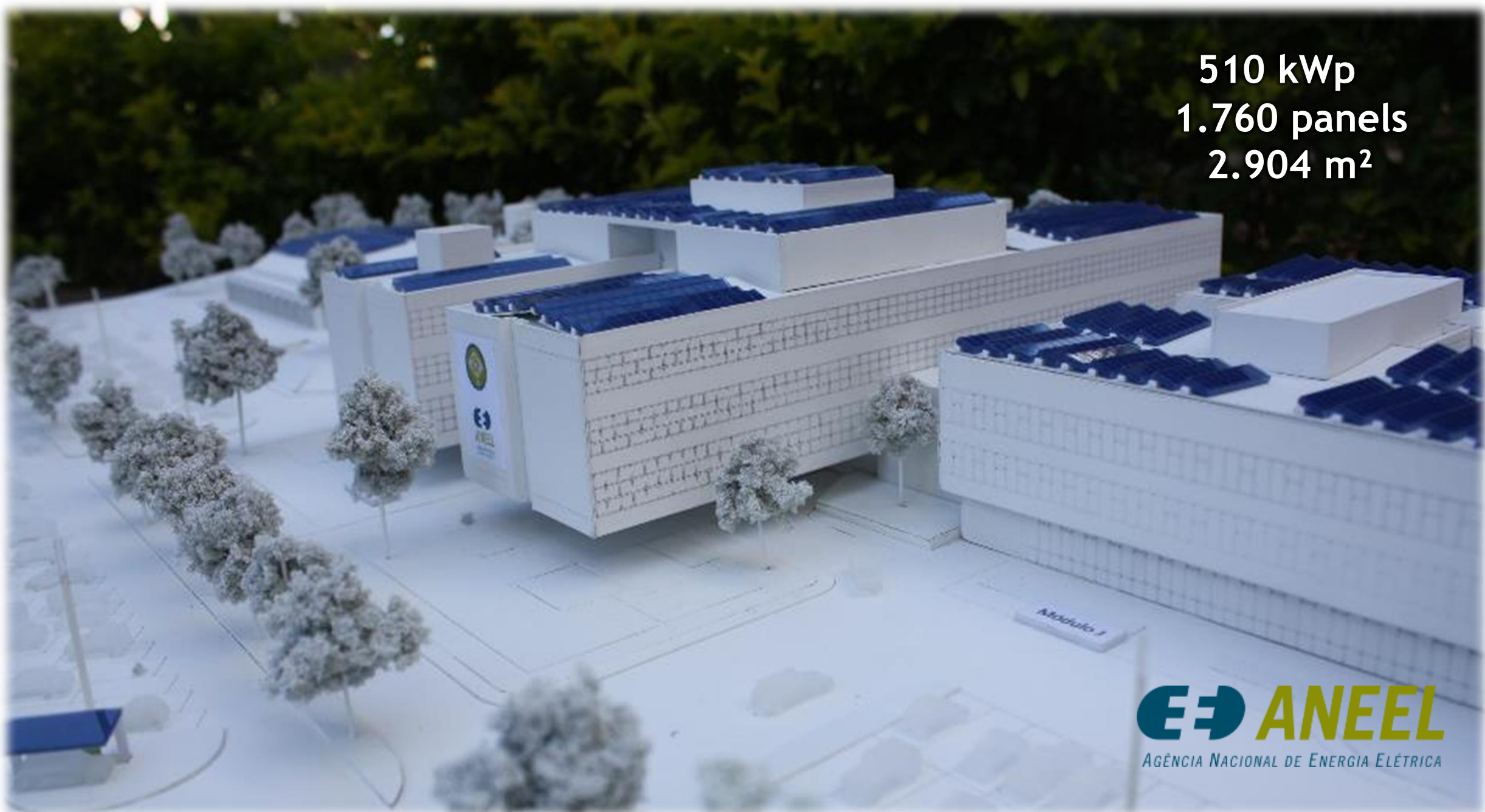
Regulation will undergo a revision before the end of 2019

Utility revenue

Tariff



510 kWp
1.760 panels
2.904 m²





Essencial para a energia.
Essencial para o Brasil.



WWW.ANEEL.GOV.BR/GERACAO-DISTRIBUIDA



www.facebook.com/aneelgovbr

DANIEL VIEIRA

SRD/ANEEL

danielvieira@aneel.gov.br

+55 61 2192 8927

SGAN 603 Módulos I e J - Brasília DF

CEP: 70830-110