

The proposed site is situated on Lalta River in SNNPR region in Sidama zone, Hagara Sodicha Kebele near Aleta Wondo town. From Awassa in direction to Moyale road after 38 km asphalt road, then the all weather gravel road to Daye in Aleta Wondo take a turn to the left on a dry weather road. It is about 15 km to reach Hagara Sodicha village.

The GPS coordinates of the area are: power house 2,207 a.s.l., 37 N0446799 and UTM 0732020 and at the intake area 2,284 a.s.l. 37 N0446882 UTM 0732086.

The survey site is situated 15 km away from the main street of aletawondo town. The total population of the Kebele is about 2,800 households. There are about 1,000 households around the envisaged hydro power station. There are also some small villages close to the villages namely Hagara Goba at 3 km, Kebado market at 1.5 km, Sedera Daela at 2 km and Kila Hegicha at 2 km.

The villagers of Hagara Sodicha are very cooperative and eager to participate within their possibilities. A cooperative to manage the

future power plant is already formed.

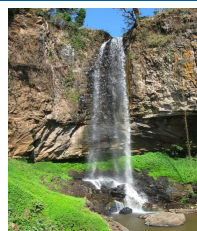
They built an access road towards the site as far as possible. 150 m<sup>3</sup> of rock will be supplied as well as all excavation and transport labour at site.

The diversion canal was prepared within few hours only from peoples from Hagara Sodicha and the neighbouring Kebele, killa hakicha.

A village map based on GPS data is done and It serves as basis for the required grid design of the Hagara Sodicha MHP.

There will be three foci. First GTZ project will connect public services (school, health centre, church, market. Second the will be efforts to create local businesses which utilise the available electricity for productive use.

Third it is proposed to draw a power line along the accessible main road, from where private households can take electricity for private use.



Lalta fall



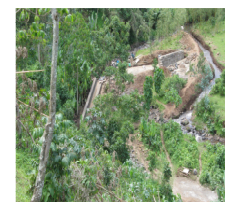
Community participation



Cooperative board members



Community meeting



Weir and diversion



Canal



Power house

### General Information

Region/Zone	: Southern region/Sidama
Woreda/Kebele	: Aleta Wondo Zuria/Hagara Sodicha
River	: Lalta river
Coordinates (waterfall)	: 37 N0446799 UTM 0732020
Head/Flow/Pot. capacity	: 45 m / 200 l/s / 55 kW
No. households	: More than 1,000 houses
Social connections	: Church, school, commercial centre

### Technical Specifications

#### Civil structure

Canal	: Lined masonry/length: 216 m
Penstock	: Ø 320 mm/length: 105m
Head	: 45 m
Flow	: 200 l/s

#### Electro Mechanic

Turbine	: T 15, net head 45m, 55 kW
Manufacturer of metal works	: Selam vocational plc. Meta Hawassa